

Owner's Manual

TRIPP LITE
SERIES

Dual-Display Docking Station, HDMI Ports (x2), USB Ports (x6), GbE

Model:
U442-DOCK22-B



Purchased product
may differ from image.

Este manual está disponible en español en la página de Eaton:
Tripplite.Eaton.com/support

Ce manuel est disponible en français sur le site Web de Eaton :
Tripplite.Eaton.com/support

Dieses Handbuch ist in deutscher Sprache auf der Eaton-Website verfügbar:
Tripplite.Eaton.com/support

Questo manuale è disponibile in italiano sul sito web di Eaton:
Tripplite.Eaton.com/support



Powering Business Worldwide

Product Features

- USB 3.0 ports that are 10 times faster than USB 2.0 and support data transfer rates of up to 5 Gbps
- Backward compatibility with USB 2.0 and 1.1
- Two HDMI ports for connecting external monitors
- A DVI monitor can be connected to the HDMI port using an HDMI-to-DVI adapter, such as Tripp Lite's P566-Series
- Dual-display video resolutions of up to 1080p @ 60 Hz
- Automatically resumes operation from hibernation and suspend modes
- Gigabit Ethernet port supports true 10/100/1000 Mbps network speeds
- IEEE 802.3az (Energy Efficient Ethernet) compliant
- Supports full-duplex and half-duplex operations
- Supports IPv4 and IPv6 pack Checksum Offload Engine (COE) to reduce CPU loading
- Supports Wake-on-LAN (WoL), VLAN tagging and Auto-MDIX
- Two USB 3.0 and four USB 2.0 hub ports for connecting additional USB peripherals
- One USB 3.0 port supports USB Battery Charging (BC) specification 1.2, allowing it to provide 1.5 amps of power for faster charging of mobile devices
- 3.5 mm mini stereo jacks for connecting speaker and microphone
- Compatible with Windows 11, 10, XP, Vista, 7, 8 and 8.1 as well as Apple macOS 11.x.x (Latest Mac version)

System Requirements

- Windows 11, 10, XP (32-bit), Vista (32- and 64-bit), 7 (32- and 64-bit), 8 (32- and 64-bit) or 8.1 (32- and 64-bit), Apple macOS 11.x.x (latest Mac version)
 - Available USB port (USB 3.0 required for USB 3.0 speeds)
 - DVI* or HDMI monitor
 - 1.6 GHz Single Core processor (DVD playback on the add-on monitor requires a 2.0 GHz Dual Core processor)
 - 1 GB RAM
 - 30 MB of available disk space
- * Requires an HDMI-to-DVI adapter, such as P566-Series

Package Contents

- U442-DOCK22-B Dual-Display Docking Station
- USB 3.0 Cable (USB-B to USB-A with USB-C Adapter, 6 ft.)
- External power supply with 5 ft. power cord (Input: 100–240V, 50/60 Hz, 0.8A; Output: 5V 4A)
- Owner's Manual

Optional Accessories

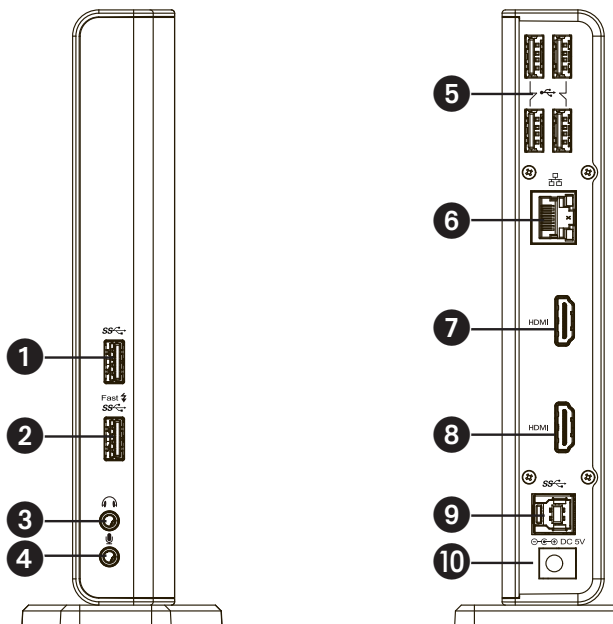
- P312-Series 3.5 mm Mini Stereo Audio Cables
- P566-Series HDMI-to-DVI Adapter Cables
- P568-Series High-Speed HDMI Cables
- U022-Series USB 2.0 A/B Device Cables
- UR022-Series Reversible USB 2.0 A/B Device Cables
- U322-Series USB 3.0 A/B Device Cables

Product Overview

Item	Description
① USB 3.0 Port	Connect to USB 3.0 devices
② USB 3.0 Port	Connect to USB 3.0 device with BC 1.2 charging
③ Speaker Jack	Connect to a speaker or earphones
④ MIC Jack	Connect to a microphone
⑤ USB 2.0 Ports	Connect to a USB 2.0 device
⑥ RJ45 Port	Connect to an Ethernet network
⑦ HDMI Connector	Connect to an HDMI or DVI display*
⑧ HDMI Connector	Connect to an HDMI or DVI display*
⑨ USB 3.0 Port (Type B)	Connect to a computer
⑩ Power Jack	Connect to the power adapter

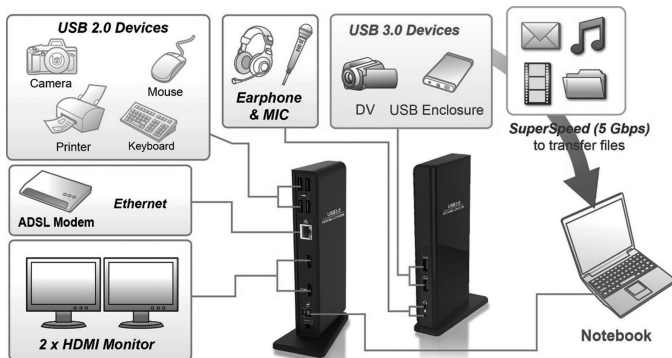
*Requires an HDMI-to-DVI adapter

Product Overview



Product Overview

Connection Diagram:



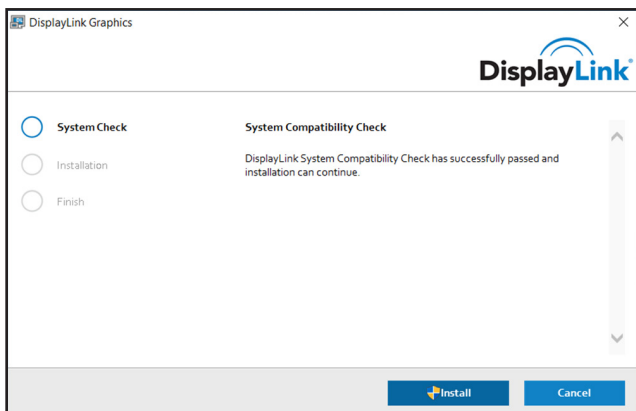
Installation

Notes:

- DisplayLink drivers are required for this device when using Windows OS. The drivers can be downloaded and installed from www.displaylink.com/downloads.
- The following strings and screenshots may vary slightly in each operating system. The driver version is subject to change without notice.

Windows

1. Click “Install” to execute the installation procedure.

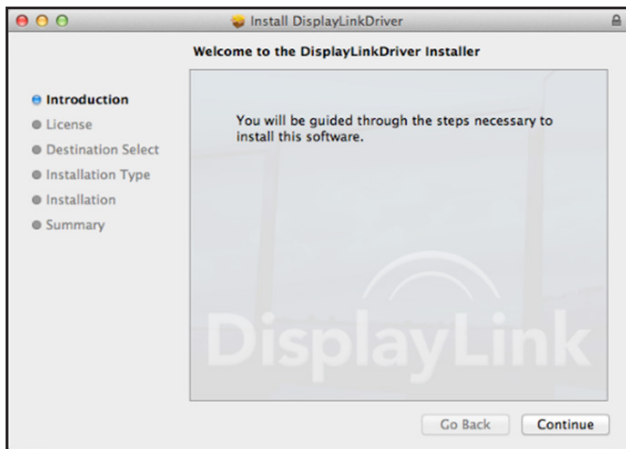


2. Be patient while the installation is in progress.
3. Connect the Docking Station to a computer after driver installation is complete.

Installation

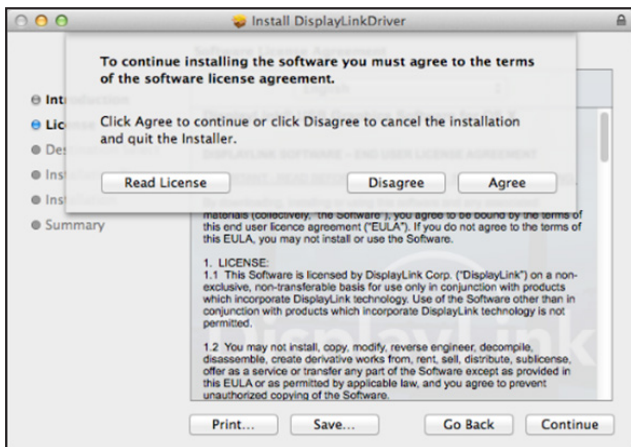
macOS

1. Locate and double-click the .dmg file to start the installation, and click "Continue."



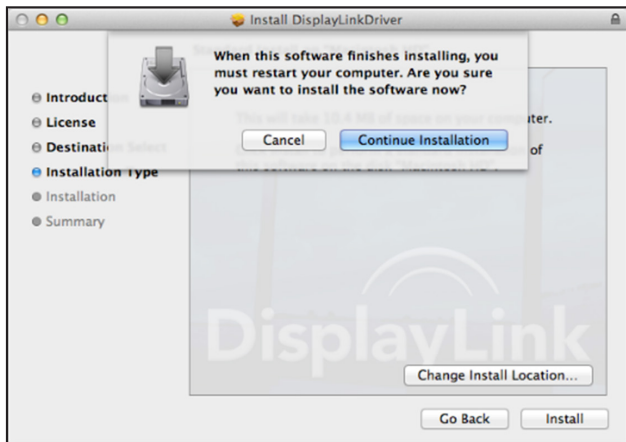
Installation

2. Click Continue > Agree.



Installation

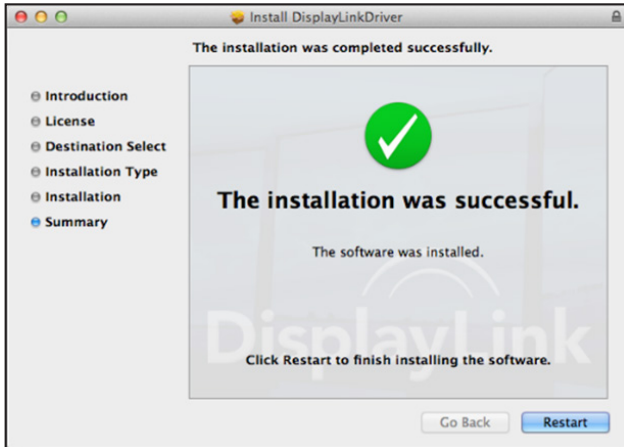
3. Click Install > Continue Installation.



4. Be patient while the installation is in progress.

Installation

5. Click “Restart” to complete the installation.



6. Connect the docking station to a computer after the driver installation is completed.

Verifying the Installation

When the installation is complete, follow the steps below to verify if the device is installed properly.

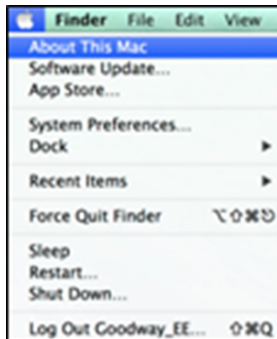
Windows

1. Access Device Manager.
Settings > Devices > Connected Devices
2. In the Device Manager window, a device named Dual Display Docking Station should be listed.

Note: If there is a “?” or “!” mark next to the item, the device is not properly installed. Delete the item, unplug the device and repeat the installation steps.

macOS

1. Access the Hardware list.
Click the Apple icon at the top left corner of the screen.



Verifying the Installation

2. Click About this Mac > More info... > System Report.



3. In the System Report window, a device named Dual Display Docking Station should be listed.

Display Configuration

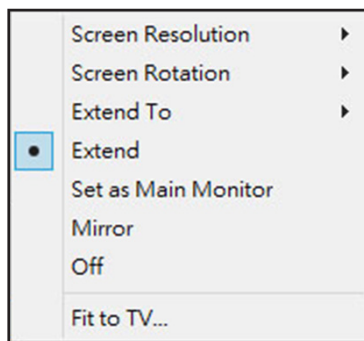
Utility Settings:

The supplied utility allows configuring the display mode, screen rotation, screen resolution and physical arrangement of your monitors.

1. Click the utility icon in Windows System Tray.

Note: *If you cannot find the icon in Windows System Tray, click the arrow icon to bring up the icon list to find it.*

2. Select a preferred option, then click it.



Display Configuration

Description of the Settings:

Options	Description
DisplayLink Manager	Enable the Windows screen resolution page
Check for Updates...	Check the latest driver and download if available
Display Setting Submenu	
Screen Resolution	Click to select an available resolution. Note that this function is invalid in mirror mode, as the resolution is defined as the resolution of the primary monitor
Screen Rotation	Rotate the screen according to the desired orientation
Extend To	The cursor can extend to desired screen via left/right/above/below movement
Extend	Extend the screen according to the desired orientation
Set as Main Monitor	Set this screen to the main screen
Notebook Monitor Off	Switch the add-on monitor to the main display and turn off the screen of the laptop. Note: This function works only when one add-on monitor is connected. This option will also only appear on the laptop screen.
Mirror	Duplicate the primary monitor to the monitor connected with the adapter
Off	Turn off the monitor

Display Configuration

Display Setting Submenu	
Fit to TV	Adjust the size of Windows Desktop on the TV. Note: This function works only when one add-on monitor is connected. This option will also only work in extended mode. The add-on monitor will change to extended mode if selecting this option while in mirror mode.
Audio Setup	Enable the Windows audio configuration page (this function works only in specific modes)
Video Setup	Enable the Windows screen resolution page

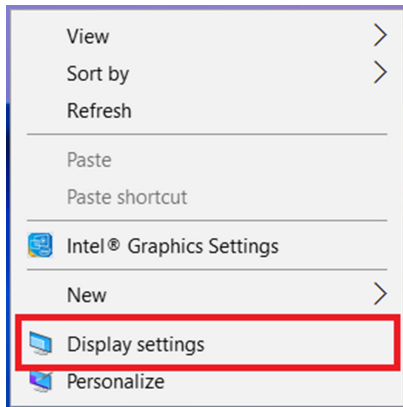
Multi-Monitor Configuration:

Extra HDMI monitors can be connected through the docking station if one monitor is already connected to the PC directly. Once the extra monitors are connected, the dock can be configured to use either “mirror mode” or “extended mode” or be set as the primary display.

Display Configuration

Windows OS

In desktop mode, right-click the desktop and select Display settings.

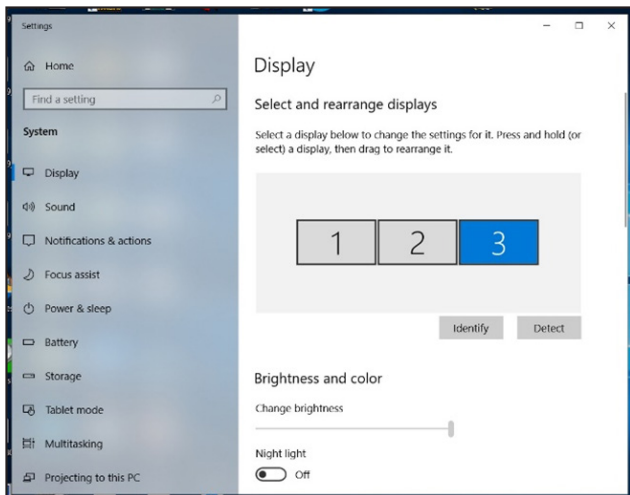


Alternatively, click the utility icon in the Windows System Tray, and then select DisplayLink Manager or Video Setup.

Display Configuration

Extended Mode

1. Refer to the Multi-Monitor Configuration section to open the configuration page.
2. Select the preferred monitor at the top of the page.



3. Check the Multiple Displays > Extend these displays.
4. Click "Apply" to confirm and close the settings screen.

Display Configuration

5. Once the setting is complete, simply drag and drop the application icons or the opened windows to the add-on monitor. However, some applications may not support displaying on the extended desktop.

Mirror Mode

1. Refer to the Multi-Monitor Configuration section to open the configuration page.
2. Select the preferred monitor at the top of the page.
3. Check the Multiple Displays > Extend these displays.
4. Click “Apply” to confirm and close the settings screen.

Set the Primary Monitor

1. Refer to the Multi-Monitor Configuration section to open the configuration page.
2. Select the preferred monitor at the top of the page.
3. Check the box of Make this my main display.

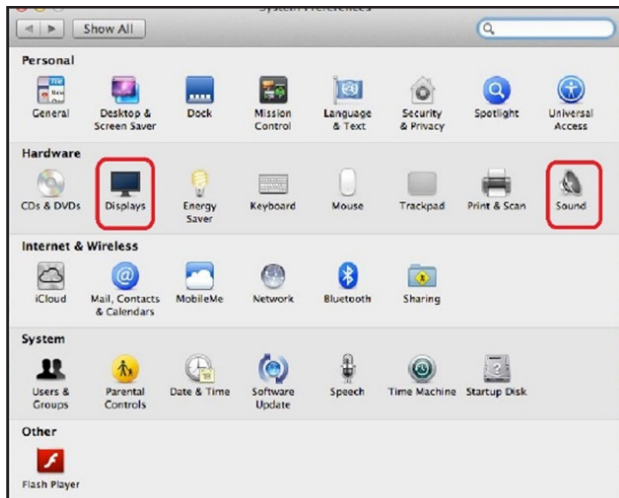
Note: For some computers, you may need to disable the main display by unchecking the box of Extend the desktop onto this monitor or Extend my Windows desktop onto this monitor.

4. Click Apply to confirm and exit.

Display Configuration

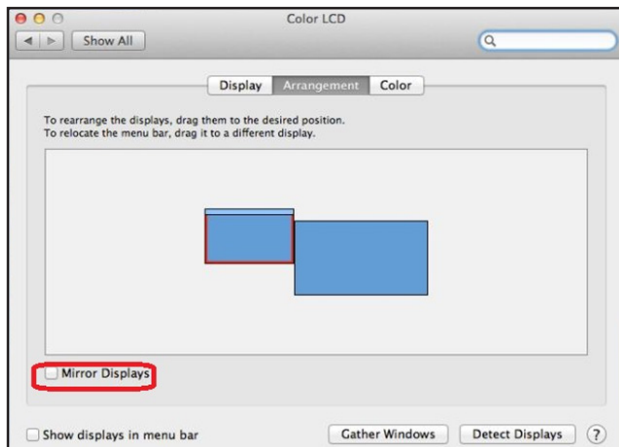
macOS

1. Click the Apple icon at the upper left corner of the screen and select System Preferences from the drop-down list.



Display Configuration

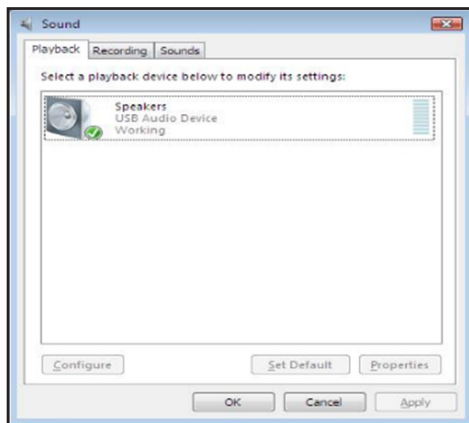
2. To switch to Mirror Mode, check the box in front of Mirror Displays.



Audio Configuration

When the docking station is connected to a computer, the audio configuration may be changed to USB (Multimedia) Audio Device automatically (this setting depends on models). If it does not work, follow the steps below to set up.

1. Open the Control Panel, then select the hardware and sound icon.
2. Click Sound > Manage audio devices, then select USB Audio Device.



Troubleshooting

1. The cursor has disappeared

If the status remains in the extended mode but the docking station is disconnected, the desktop will still extend to the add-on monitor. The cursor may not be found on the primary monitor. If it happens, connect the add-on monitor through the docking station again or keep moving the mouse.

2. Video playback in extended mode

If the video or DVD playback quality is poor or low performance in extended mode, play it back on the primary monitor instead of the add-on monitor.

3. In Extended Mode, the add-on monitor has a black border around the desktop

This happens when the resolutions used by the add-on monitor are greater than the resolutions used by the primary monitor. To solve the problem, configure the add-on monitor to use the same resolution as the primary monitor.

4. The add-on monitor is flickering

This is usually caused by a low refresh rate.

Mirror Mode – Increase the refresh rate of the main monitor. This will in turn increase the refresh rate of the add-on monitor, stopping the flickering.

Extended Mode – Increase the refresh rate of the add-on monitor.

Troubleshooting

5. The video does not display properly in Full-Screen Mode.

Try the following tips to improve the smoothness of video playback:

- a. Reduce the resolution of the display.
- b. Use the adapter in Extended Mode.
- c. Terminate any other CPU-intensive applications running on the computer.
- d. Some media players require DirectX hardware support to correctly operate. Try a different media player that requires less DirectX support.
- e. Drag the media player to the add-on screen and close the player. Restart the player and it should open on the add-on monitor. Now try playing the media file again.
- f. Reduce the hardware acceleration level of the primary display (NOT the add-on monitor) to levels 1, 2 or 3, then restart the media player. The hardware acceleration can be found by right-clicking on the desktop and clicking "Properties > Settings > Advanced > Troubleshoot."
- g. The video playback may be unusual when the add-on monitor is mirroring the primary display and there is another extended screen connected to the computer. The extended screen must be disabled before the content will be cloned correctly to the add-on monitor.

Specifications

Host Interface	USB 3.0	
Connector	Video Output	HDMI (x2)
	Host Upstream Link	USB-B (Female)
	HUB Downstream Link	USB-A (Female)
	Audio Port	3.5 mm Stereo Mini-Jack 2.1
	Ethernet Port	RJ45
	Power	DC Power Jack
Video Resolution	HDMI	Single Display: 2560 x 1440 @ 60 Hz Dual Display up to 1080p @ 60 Hz
Supported Colors	16-bit and 32-bit Color	
Audio	2.1 Channel	
Ethernet	10/100/1000 Mbps	
Power	Power Mode	Self-Powered
	Power Adapter	Input: AC 100-240V
	Output: DC 5V 4A	Operating Power: 14.43W Suspend Mode Power: 1.95W
Supported Operating Systems	Windows 11, 10, XP (32-bit), Vista (32- and 64-bit), 7 (32- and 64-bit), 8 (32- and 64-bit), 8.1 (32- and 64-bit) and Apple 11.x.x (latest Mac version)	

Specifications

Physical Properties	Housing: ABS Plastic
	Weight: 0.8 lb. (0.37 kg)
Storage Temperature Range	-4° to 158°F (-20° to 70° C)
Operating Temperature Range	32° to 104°F (0° to 40°C)
Relative Humidity	20 to 80% RH, Non-Condensing
Compliance	CE, FCC

Warranty

1-Year Limited Warranty

We warrant our products to be free from defects in materials and workmanship for a period of one (1) year from the date of initial purchase. Our obligation under this warranty is limited to repairing or replacing (at its sole option) any such defective products. Visit TrippLite.Eaton.com/support/product-returns before sending any equipment back for repair. This warranty does not apply to equipment which has been damaged by accident, negligence or misapplication or has been altered or modified in any way.

EXCEPT AS PROVIDED HEREIN, WE MAKE NO WARRANTIES, EXPRESS OR IMPLIED, INCLUDING WARRANTIES OF MERCHANTABILITY AND FITNESS FOR A PARTICULAR PURPOSE. Some states do not permit limitation or exclusion of implied warranties; therefore, the aforesaid limitation(s) or exclusion(s) may not apply to the purchaser.

EXCEPT AS PROVIDED ABOVE, IN NO EVENT WILL EATON BE LIABLE FOR DIRECT, INDIRECT, SPECIAL, INCIDENTAL OR CONSEQUENTIAL DAMAGES ARISING OUT OF THE USE OF THIS PRODUCT, EVEN IF ADVISED OF THE POSSIBILITY OF SUCH DAMAGE. Specifically, we are not liable for any costs, such as lost profits or revenue, loss of equipment, loss of use of equipment, loss of software, loss of data, costs of substitutes, claims by third parties, or otherwise.

Warranty

FCC Notice, Class B

This device complies with part 15 of the FCC Rules. Operation is subject to the following two conditions: (1) This device may not cause harmful interference, and (2) this device must accept any interference received, including interference that may cause undesired operation.

Note: This equipment has been tested and found to comply with the limits for a Class B digital device, pursuant to part 15 of the FCC Rules. These limits are designed to provide reasonable protection against harmful interference in a residential installation. This equipment generates, uses and can radiate radio frequency energy and, if not installed and used in accordance with the instructions, may cause harmful interference to radio communications. However, there is no guarantee that interference will not occur in a particular installation. If this equipment does cause harmful interference to radio or television reception, which can be determined by turning the equipment off and on, the user is encouraged to try to correct the interference by one or more of the following measures:

- Reorient or relocate the receiving antenna.
- Increase the separation between the equipment and receiver.
- Connect the equipment into an outlet on a circuit different from that to which the receiver is connected.
- Consult the dealer or an experienced radio/TV technician for help.

Any changes or modifications to this equipment not expressly approved by Eaton could void the user's authority to operate this equipment.

WEEE Compliance Information for Customers and Recyclers (European Union)



Under the Waste Electrical and Electronic Equipment (WEEE) Directive and implementing regulations, when customers buy new electrical and electronic equipment from Eaton, they are entitled to:

- Send old equipment for recycling on a one-for-one, like-for-like basis (this varies depending on the country)
- Send the new equipment back for recycling when this ultimately becomes waste

Warranty

Use of this equipment in life support applications where failure of this equipment can reasonably be expected to cause the failure of the life support equipment or to significantly affect its safety or effectiveness is not recommended.

Eaton has a policy of continuous improvement. Specifications are subject to change without notice. Photos and illustrations may differ slightly from actual products.



Eaton
1000 Eaton Boulevard
Cleveland, OH 44122
United States
Eaton.com

© 2023 Eaton
All Rights Reserved
Publication No. 23-07-724
933F5B_RevD
August 2023

Eaton is a registered
trademark.

All trademarks are property
of their respective owners.